



LISA

Dear customer,

we would like to congratulate you on your purchase of **LISA MOUNTING-Protect**. **LISA MOUNTING-Protect** is an intelligent security device preventing the removal of paintings that works without any external power supply. Thanks to a sophisticated battery management system, **LISA MOUNTING-Protect** virtually requires almost no power. The only time battery energy is required is when the battery needs to self-discharge and if the alarm signal is triggered.

Functional Description

LISA MOUNTING-Protect consists of two components: the alarm transmitter and the alarm module. The alarm module is fixed to the rear of the painting; the alarm transmitter is screwed or glued to the exhibition wall. Upon removal of the alarm module an audio alarm is triggered. The duration of the alarm signal lasts as long as the painting is being removed from its original position on the wall. The duration of the alarm can be adjusted from 5 to 70 seconds. If the painting is replaced on wall the alarm signal nevertheless continues for the duration of the previously set up interval.

If the painting is removed permanently the alarm continuous permanently as well.

Additionally, the alarm module includes a sensor indicating any acts of sabotage.

Scope of delivery

The following components are included in the delivery of **LISA MOUNTINGProtect**:

1. Alarm module **LISA MOUNTING-Protect**
2. Cover with adherend
3. Alarm transmitter
4. 2 x button cells (CR2016)
5. Security clip for alarm module
6. Retaining screw for alarm transmitter
7. Operation and installation manual

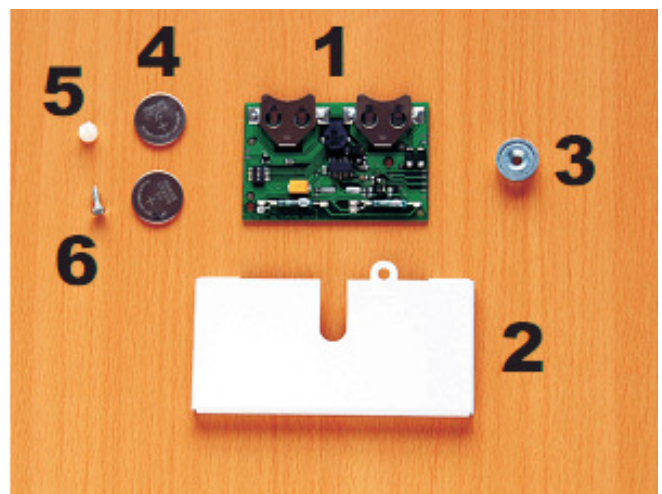


Figure 1.0

Installation and start up

1. Checking of delivery contents

Please check the components included in the delivery for completeness (see scope of delivery). In case of any query, please contact your supplier.

2. Install cover on picture frames or rear of picture

The cover for the alarm module is glued with its rear and with the opening of its retaining lug pointing up to the rear of the picture or the picture frame. The position can be chosen freely. The minimal construction depth of the alarm transmitter and the alarm module is 20 mm. **The maximal distance of 10mm between the alarm transmitter and the alarm module must not be exceeded.** Hence, a maximum depth of 20mm from wall to the rear of the picture is possible.



Figure 2.0

3. Hanging of the picture and marking of corners

Hang the picture at the desired location. Then, mark the corners of the pictures frame (e.g. lower right corner). The marking should be done with a pencil or a masking tape.

4. Measuring of the position the alarm transmitter at the rear of painting

Remove the picture from the wall. Now determine the distance of the marking on the cover of the alarm module with the previously identified corner markings (see 3). If you wish to make sure that you measured correctly, you can remove the marking from the cover.

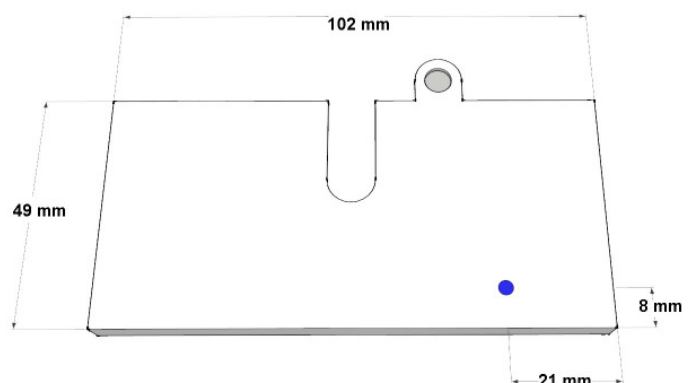


Figure 2.1

Example:

The measuring of the position produces the following results:

Distance between lateral edge: 15 cm
Distance to lower edge: 5 cm.

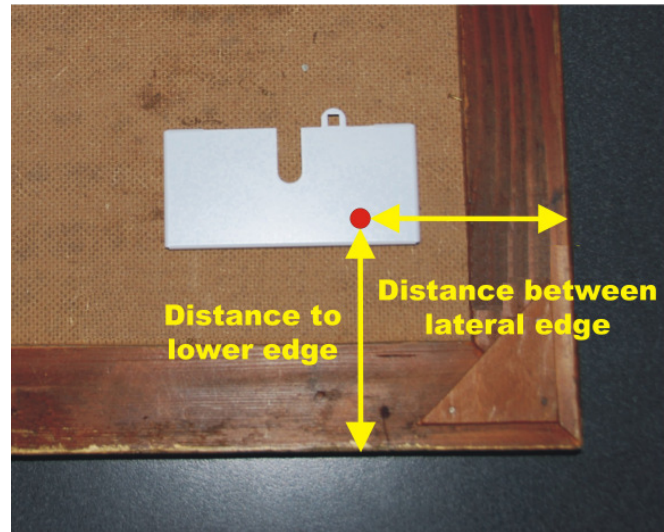


Figure 3.1

5. Positioning and fixing the alarm transmitter

The position of the alarm transmitter is measured from the originally marked corner of the picture frame and then marked. The alarm transmitter is then screwed at this newly marked position.



Figure 3.2

6. Setting of DIP Switch Adjustments

The alarm module includes a DIP miniature switch. Use this DIP miniature switch to set up the type and duration of the alarm signal. The alarm times per individual switch are then added together.

DIP1: ON = min. **5 seconds alarm** after triggering (the alarm times are added together)

DIP2: ON = min. **20 seconds alarm** after triggering (the alarm times are added together.)

DIP3: ON = min. **45 seconds alarm** after triggering (the alarm times are added together.)

DIP4: OFF = permanent tone; **ON** = melody



If DIP1, DIP2 and DIP3 are switched on „OFF“ the alarm signal only sounds as long as the picture is removed from its original position. As soon as the pictured is put back the alarm signal stops.

Example:

- DIP1: ON (min. 5 seconds alarm after triggering)
- DIP2: OFF (min. 20 seconds alarm after triggering)
- DIP3: ON (min. 45 seconds alarm after triggering)
- DIP4: OFF OFF = permanent tone; ON = melody

After removing the picture a permanent audio alarm signal is issued for at least 50 seconds- even if the picture is then immediately being replaced to its original position.

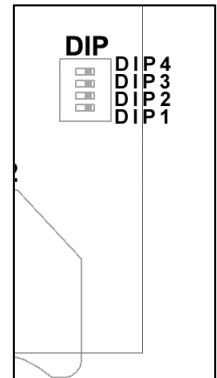


Figure 4.0

Factory setting: DIP1, DIP2, DIP3 and DIP4 = OFF
Duration of permanent alarm = as long as the object is removed, permanent tone

7. Insertion of batteries

The batteries are inserted in the battery holders BAT1 and BAT2 (see following survey and settings) with the “- pole” pointing at the circuit board.

Mind the polarity!



The alarm signal is issued right after insertion of the batteries!

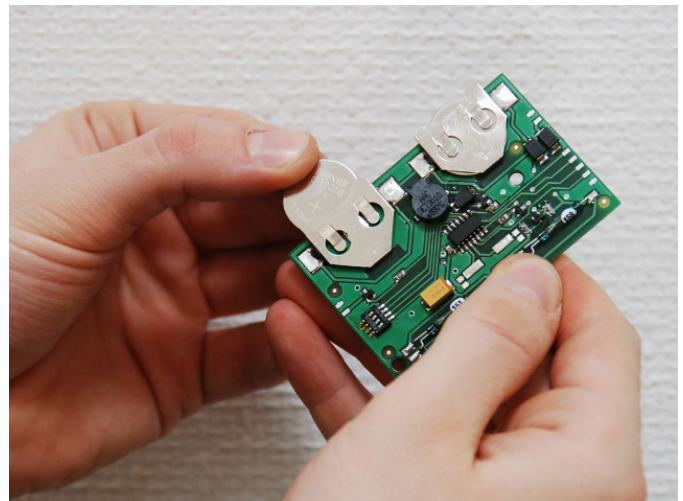


Figure 4.1

8. Insertion and Fixation of alarm module with security clip.

The alarm module is inserted into the cover and then fixed by inserting the security clip. The audio alarm transmitter (buzzer) is located in the slot of the cover.

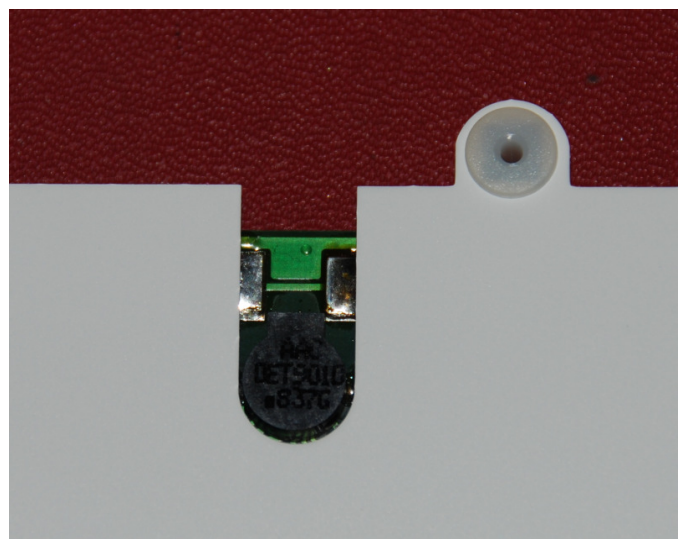


Figure 4.2

9. Hanging of the picture

The picture is now fastened to the wall. The alarm signal will stop as soon as the previously set up alarm interval has finished. If the picture is removed afterwards the signal will be triggered again.



If the signal does not stop by the end of the previously set up time interval, the positioning of the alarm transmitter has to be checked again (see under 5 positioning and fixing the alarm transmitter) see following survey and settings.



Figure 5.0

Survey of connections and settings

Batteries:

BAT1 and BAT2 require button cells (CR2016). Mind the polarity ("+" is positioned on the circuit board).

Open Collector output:

The open collector output can be operated on request. This function is not specified and is used for upgrades.

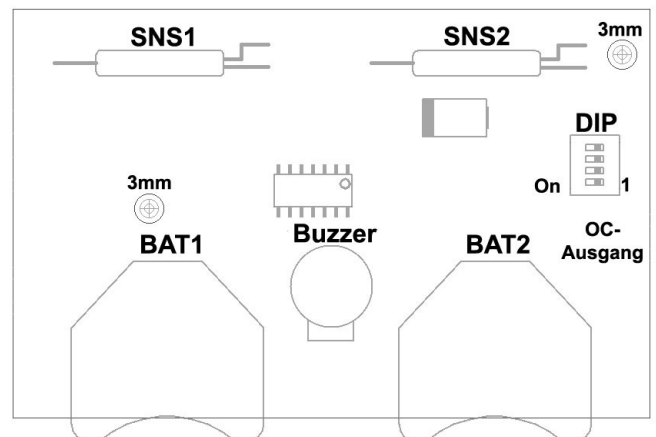


Figure 5.1

Technical Data

Operating voltage:	3V DC
Max. power consumption:	~0 mA during supervision
Switch output:	on request
Size circuit board:	70 x 48 x 5 L x W x H in mm, weight 15 gr.
Size cover:	104 x 50 x 6 L x W x H in cm, weight 16 gr.
Size alarm transmitter:	radius 16 mm, heigth 5 mm, weight 6 gr.

Subject to technical modifications and errors. We gladly advise we you on the installation. Technical support hotline +49 2546 911-25 or Email support@heddier.com.



LISA